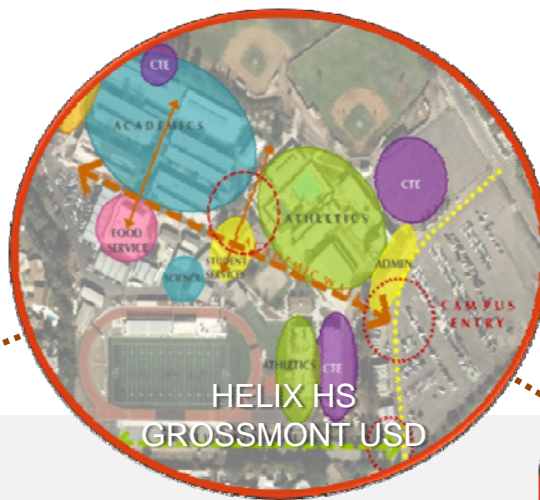


CRAWFORD EDUCATIONAL COMPLEX
& **MANN** MIDDLE SCHOOL



02 DECEMBER 2010 **TASK FORCE**
Meeting #3

MASTER PLAN



MEETING DATE | **AGENDA**

OCT 21, 2010 | Process Overview & Visioning

NOV 09, 2010 | Program & Campus Opportunities

DEC 02, 2010 | Master Plan Recommendation

PROCE | TASK FORC

- **TASK FORCE PROCESS**

MEETING DATES & AGENDAS

- **COMMUNITY INPUT**

REVIEW IDEA PLANS

- **MASTER PLAN**

ALTERNATIVES

- **PRIORITIZATION**

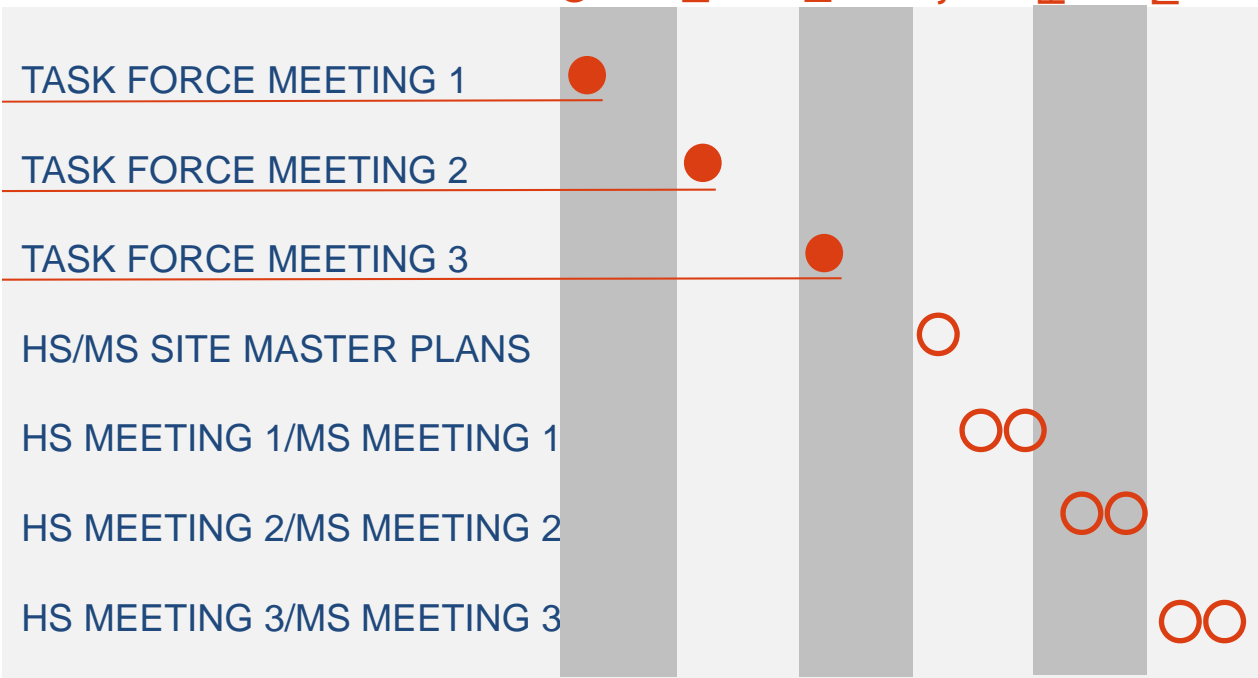
RECOMMENDED MASTER PLAN

COLLABORATION



AGENDA

OCTOBER
NOVEMBER
DECEMBER
JANUARY
FEBRUARY
MARCH



COLLABORATION



SCHEDULE

4 SITES:

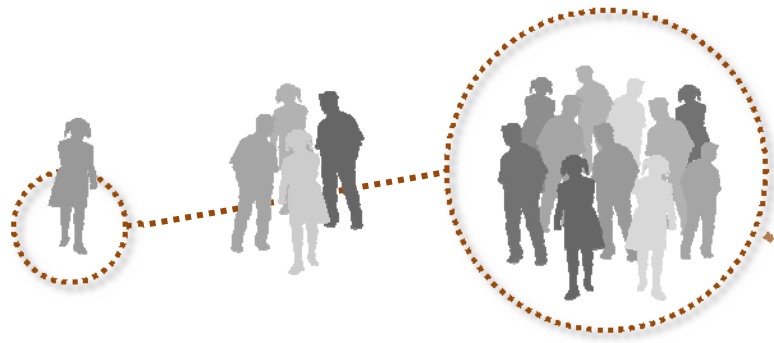
(FORMER)
ALT. ED.

MANN MS

STADIUM

CRAWFORD
HS





IDEAS
Your VISION!

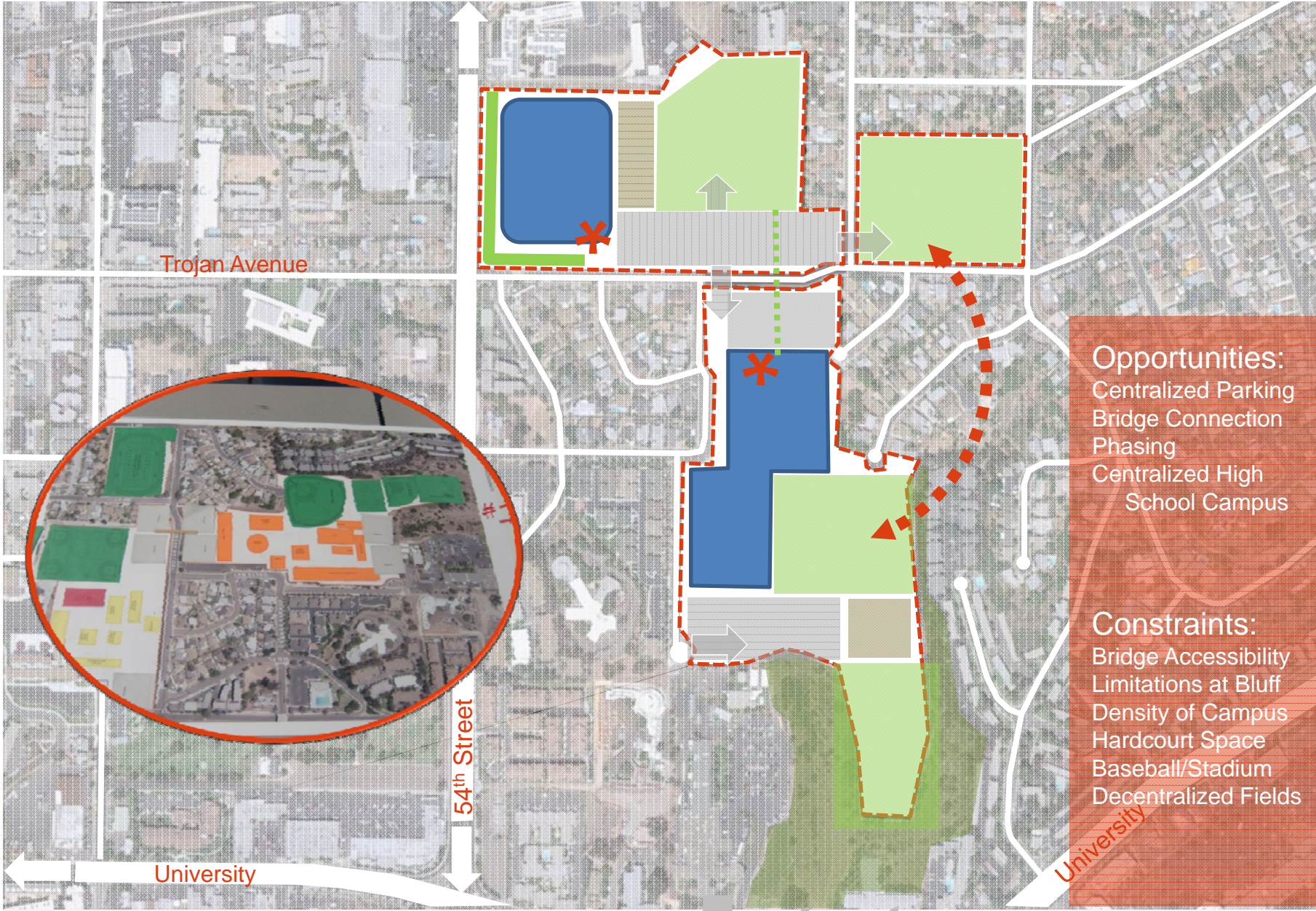
TASK FORCE

CRAWFORD/MANN

COMMON THEMES

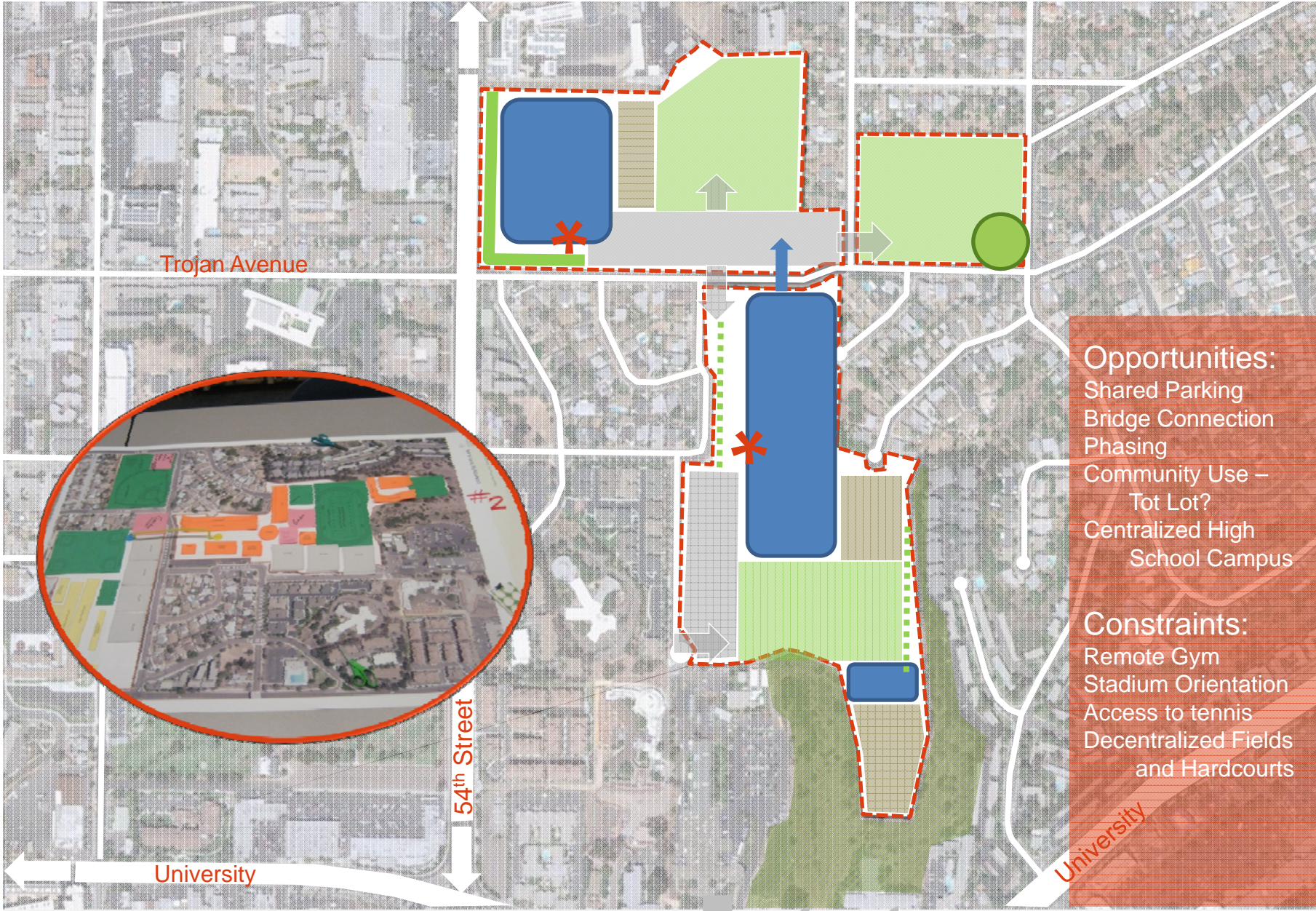
Minimize Impact to the
Neighborhood:
Noise-Pedestrians-Light
Bridge
Shared [maximized] Parking
Welcoming! Identity!
Community Use of Playfields





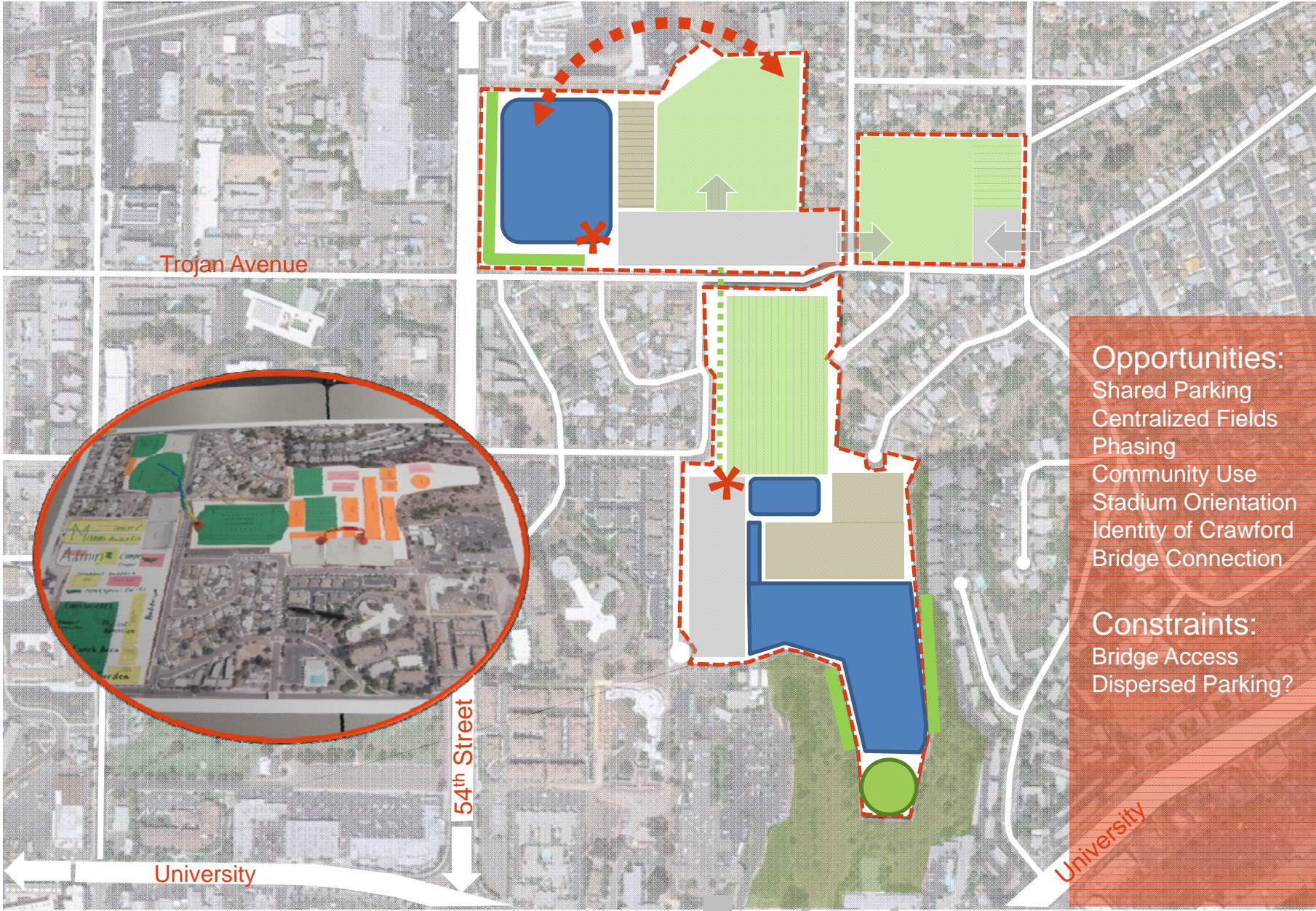
Opportunities:
 Centralized Parking
 Bridge Connection
 Phasing
 Centralized High School Campus

Constraints:
 Bridge Accessibility
 Limitations at Bluff
 Density of Campus
 Hardcourt Space
 Baseball/Stadium
 Decentralized Fields



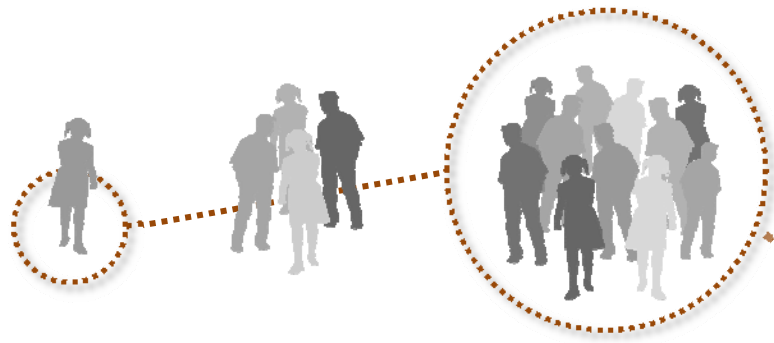
- Opportunities:**
- Shared Parking
 - Bridge Connection
 - Phasing
 - Community Use – Tot Lot?
 - Centralized High School Campus

- Constraints:**
- Remote Gym
 - Stadium Orientation
 - Access to tennis
 - Decentralized Fields and Hardcourts



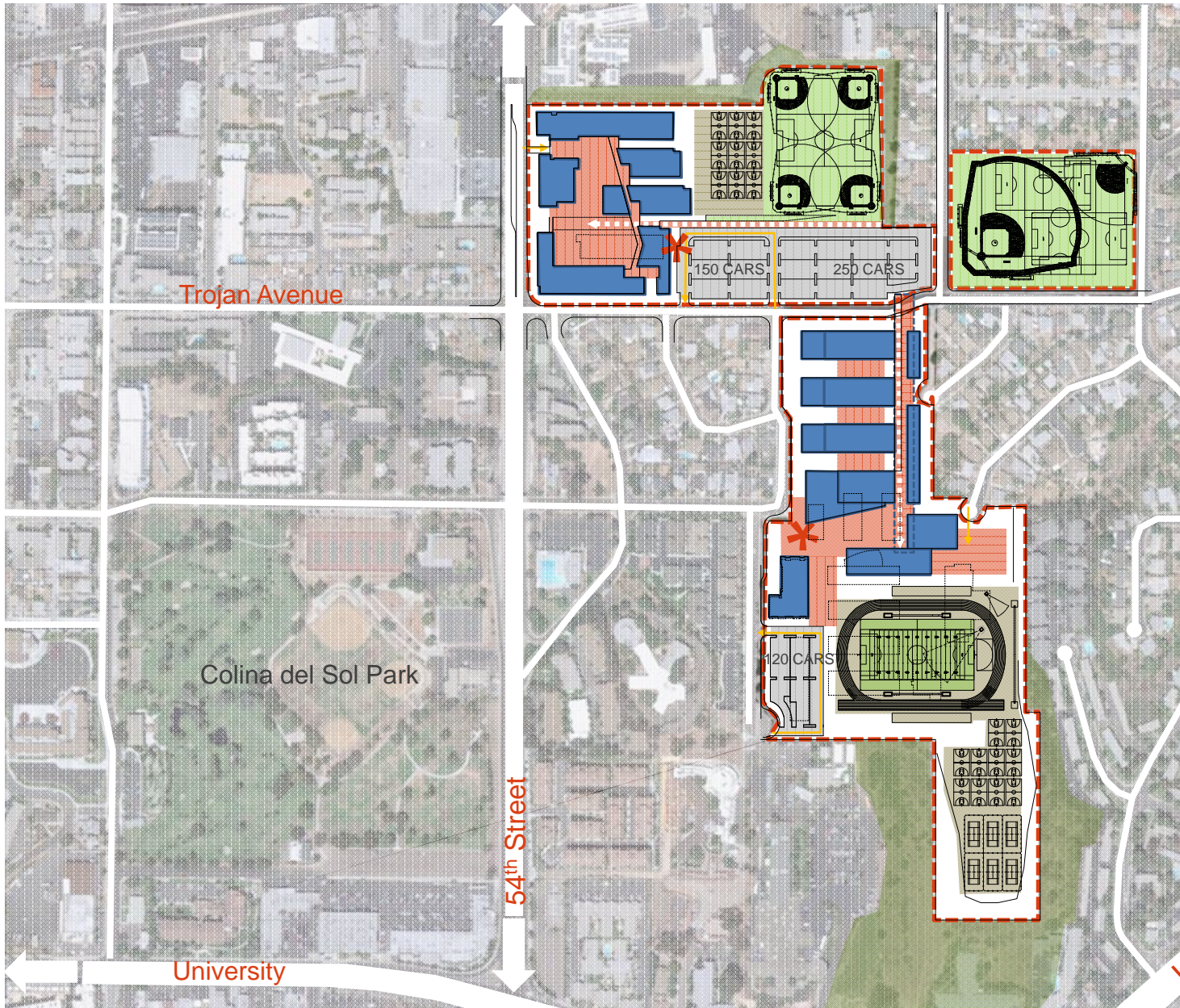
Opportunities:
 Shared Parking
 Centralized Fields
 Phasing
 Community Use
 Stadium Orientation
 Identity of Crawford
 Bridge Connection

Constraints:
 Bridge Access
 Dispersed Parking?



MASTER PLAN
Options

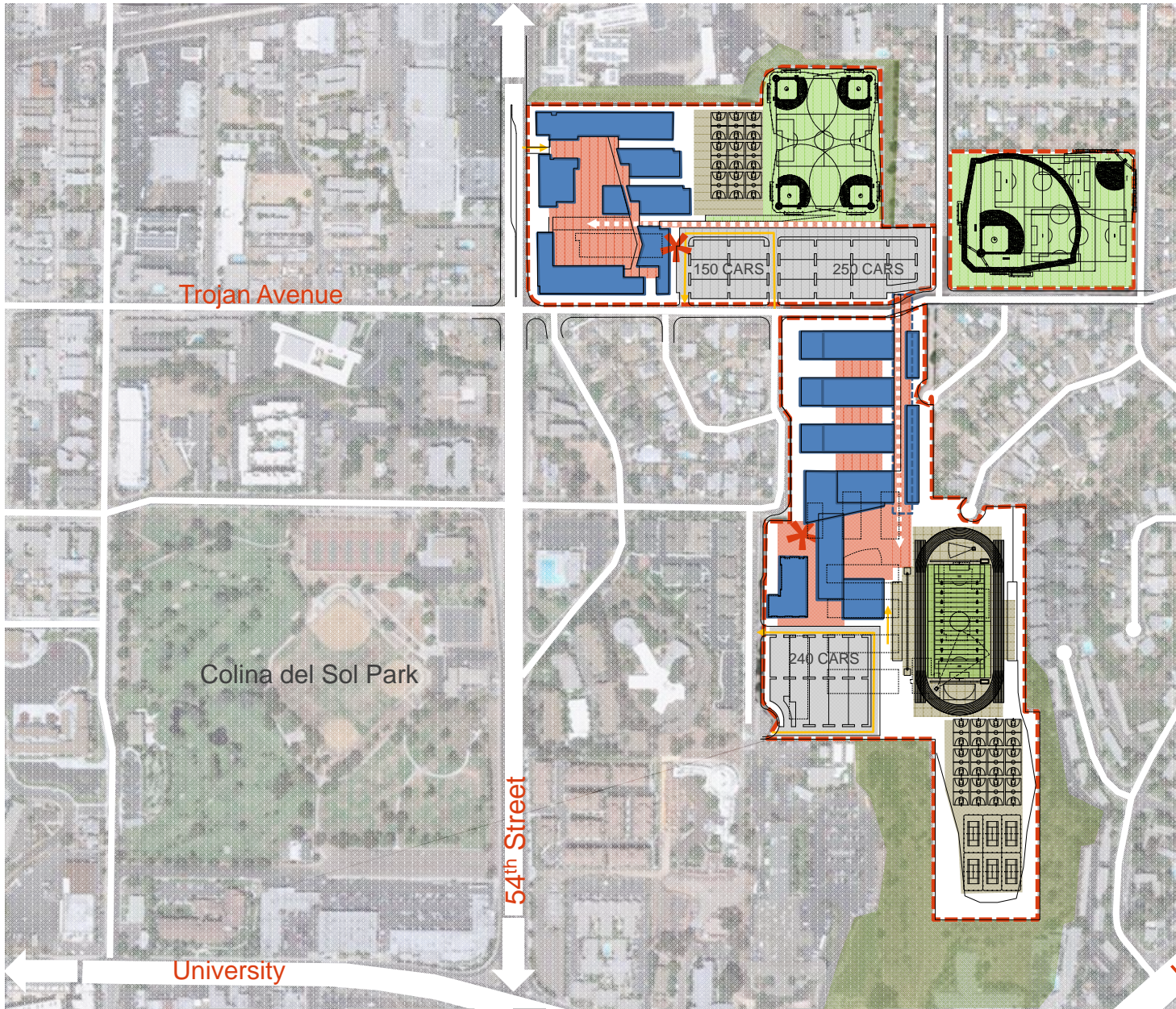
TASK FORCE



- Opportunities:**
- Bridge Connection w/good Access
 - Community Use
 - Proximity of Stadium for School Use
 - Identity of MS/HS
 - Phasing of MS
 - Service Access @ MS
 - Tiered Massing of HS
 - Roof Garden

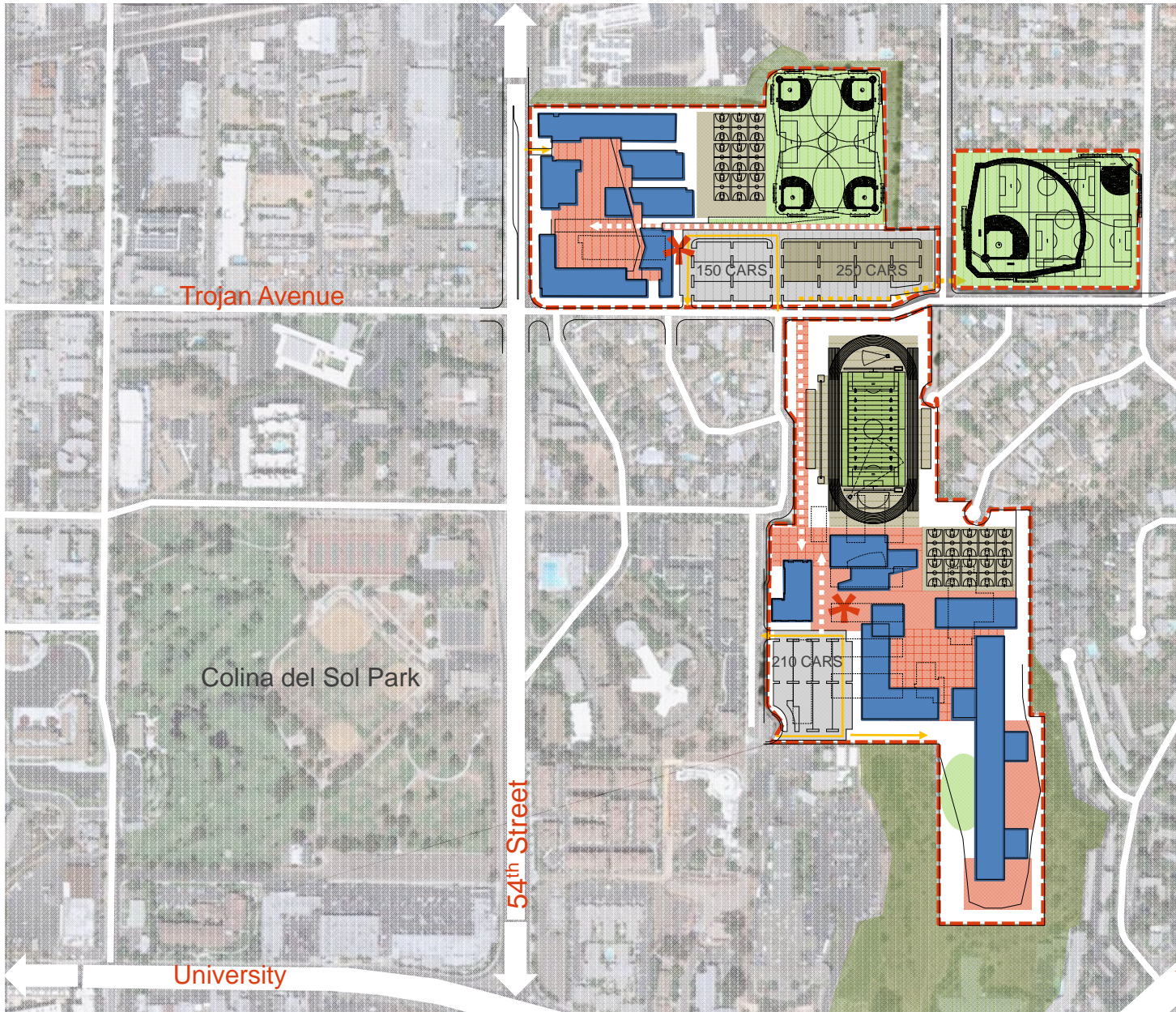
- Constraints:**
- Parking Remote from Stadium & Gym
 - Phasing of HS
 - Stadium Orientation
 - Service Access @ HS
 - Reduced Parking
 - Reduced Hardcourts
 - Tennis Remote for Community Use
 - Hardcourts Remote from Gym
 - Higher Density @ HS
 - Roof Garden
 - Smaller HS Quad

OPTION * TWO



Opportunities:
 Bridge Connection
 w/good Access
 Community Use
 Proximity of Stadium
 for School Use
 Phasing of MS
 Service of MS
 Stadium Orientation
 Identity of MS/HS
 Tiered Building Mass
 Roof Garden

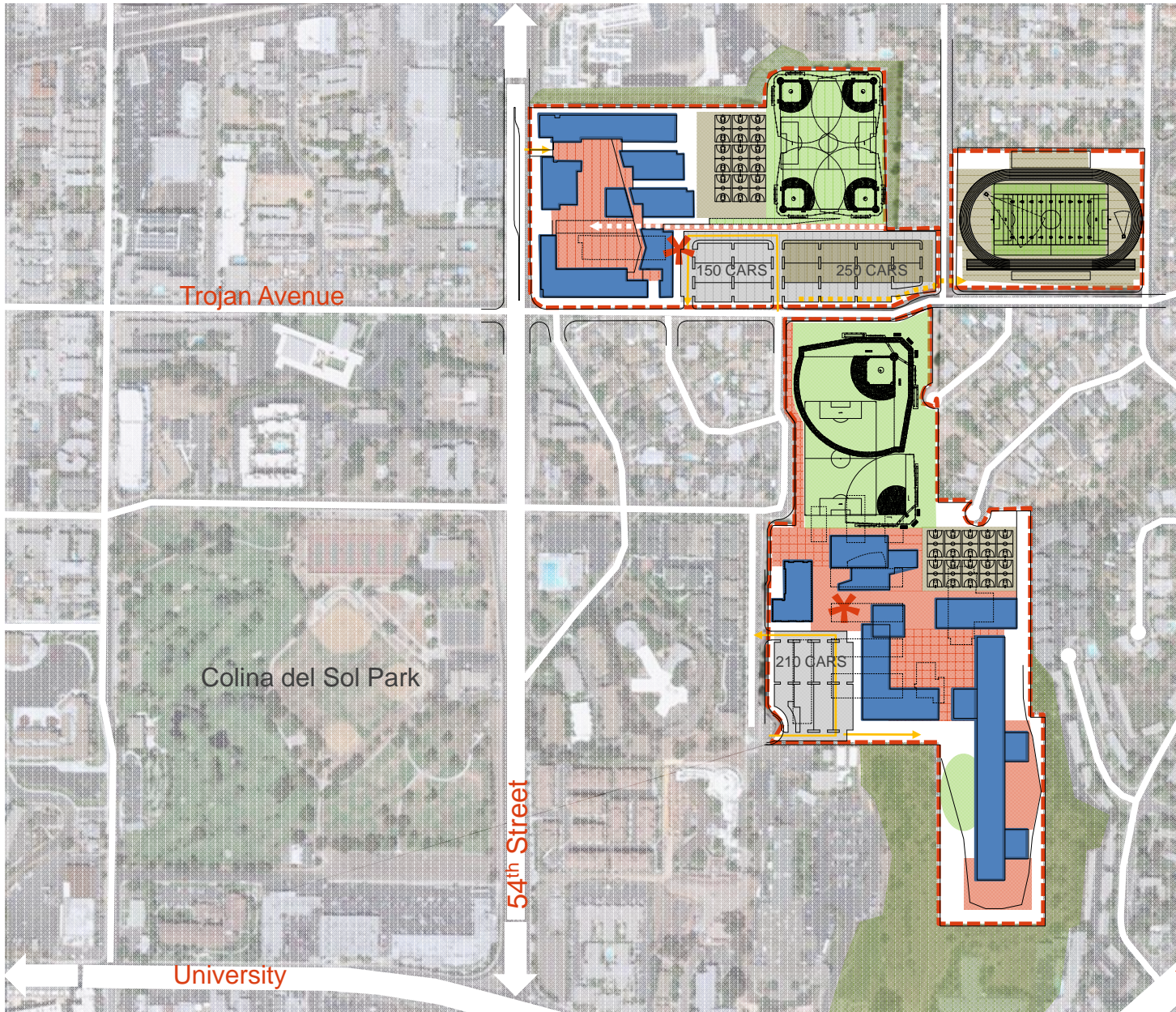
Constraints:
 Parking Remote from
 Stadium
 Phasing of HS
 Service Access of HS
 Tennis Remote for
 Community Use
 Hardcourts Remote
 from Gym
 Access to Stadium
 thru Campus?
 Roof Garden



- Opportunities:**
- Shared Student-Event Parking
 - Centralized Fields
 - Phasing of MS
 - Phasing of HS
 - Community Use
 - Stadium Orientation
 - Proximity of Stadium for School Use
 - Identity of MS/HS
 - Bridge Connection
 - Service Access @ MS
 - Service Access @ HS
 - Proximity of Hard Courts to Gym
 - Centralized Tennis
 - Garden Orientation

- Constraints:**
- Bridge Access
 - Tennis Deck over Parking

OPTION * THREE



- Opportunities:**
- Shared Student-Event Parking
 - Centralized Fields
 - Phasing of MS
 - Phasing of HS
 - Community Use
 - Identity of MS/HS
 - Bridge Connection
 - Service Access @ MS
 - Service Access @ HS
 - Proximity of Hard Courts to Gym
 - Centralized Tennis
 - Garden Orientation

- Constraints:**
- Bridge Access
 - Stadium Orientation
 - Remote Stadium for School Use
 - Tennis Deck over Parking

OPTION *THREE

CRAWFORD/MANN

PRIORITIZATION

- School Entrance
- Campus Identity
- Pedestrian Circulation
- Playfield Location
- Parking
- Campus Quad
- Phasing



LPA

creating sustainable places and spaces that enrich the lives of those who use them



THANK YOU!